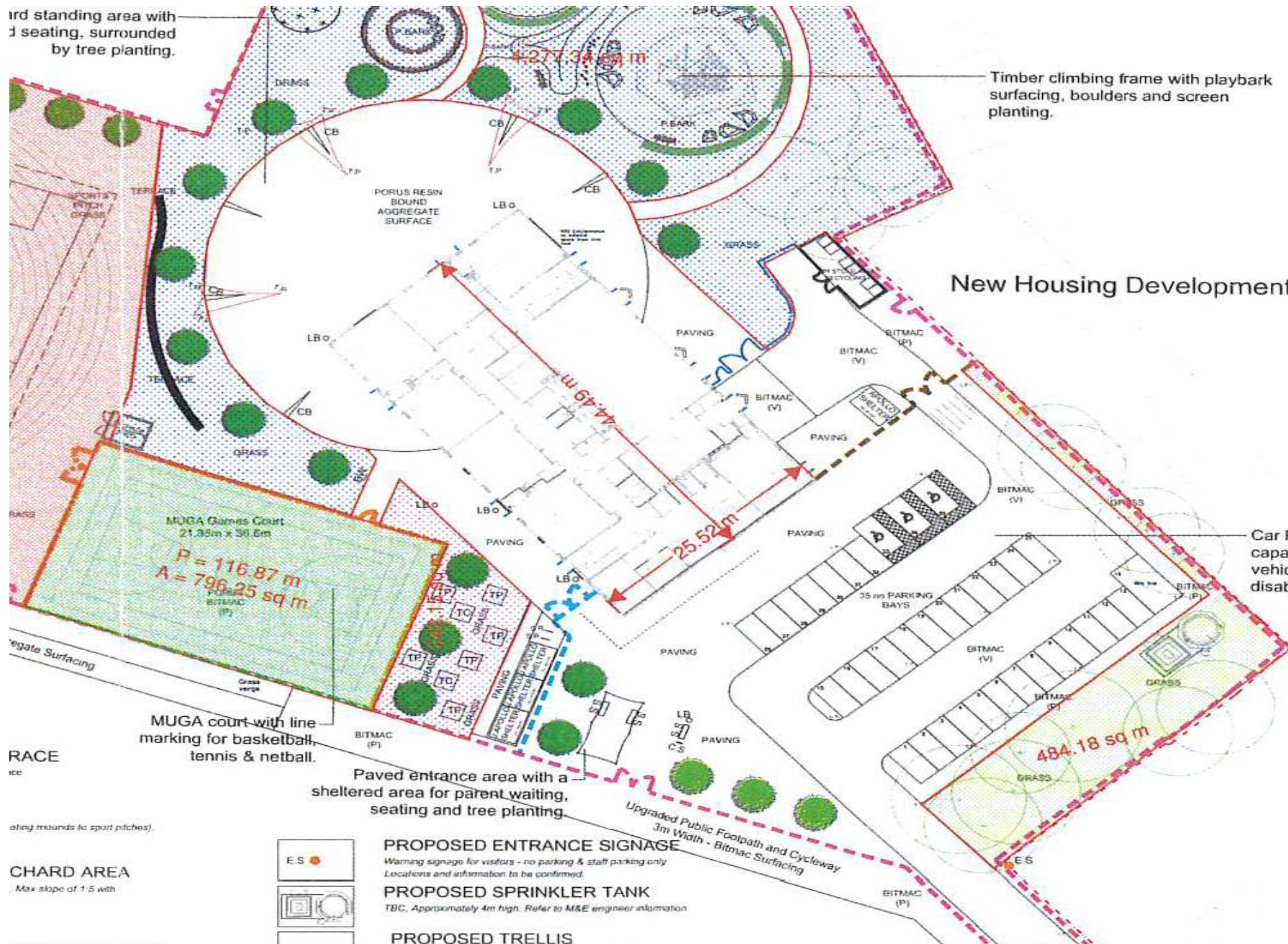


Hard standing area with seating, surrounded by tree planting.

Timber climbing frame with playbark surfacing, boulders and screen planting.

New Housing Development

Car Park w capacity for vehicles in disabled bays



MUGA Games Court
21.35m x 36.6m
P = 116.87 m
A = 796.25 sq m
BITMAC (P)

MUGA court with line marking for basketball, tennis & netball.

Paved entrance area with a sheltered area for parent waiting, seating and tree planting

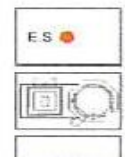
484.18 sq m

35m PARKING BAYS

Upgraded Public Footpath and Cycleway
3m Width - Bitmac Surfacing

RACE

CHARD AREA
Max slope of 1:5 with



PROPOSED ENTRANCE SIGNAGE

Warning signage for visitors - no parking & staff parking only
Locations and information to be confirmed.

PROPOSED SPRINKLER TANK

TBC, Approximately 4m high. Refer to M&E engineer information

PROPOSED TRELLIS