

Parts of a Plant

Amazing Fact

There are 80,000 edible plant species in the world. This means you could try something new every day for 220 years!

Challenge

Label the parts of the plant using the words in the box.

stem

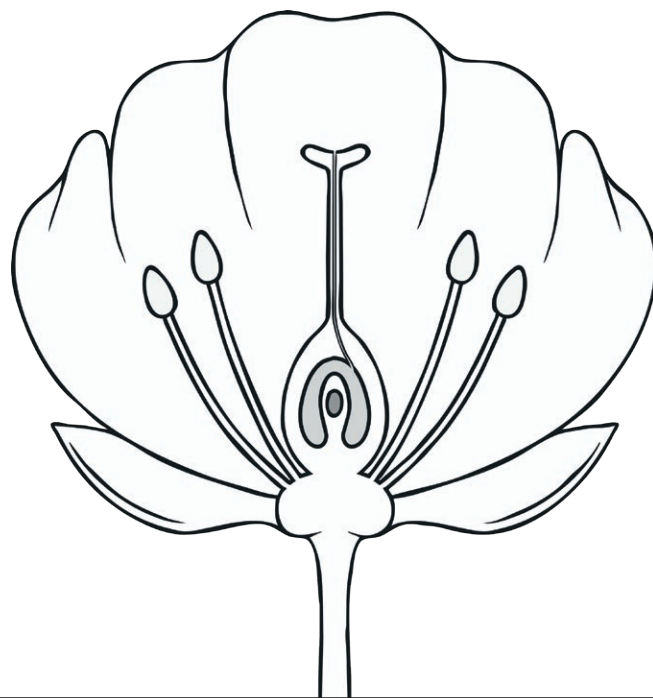
petal

sepal

pollen

anther

filament



You could also try to find out:

- how many plants are actually used for food;
- why so few plants account for so much of our food;
- why so many plant species are endangered;
- how much of the earth's original rainforest has been cleared.

Parts of a Plant

Amazing Fact

There are 80,000 edible plant species in the world. This means you could try something new every day for 220 years!

Challenge

Draw your own diagram of a flowering plant and label the parts of the plant using the words in the box.

stem

petal

sepal

roots

pollen

anther

filament

Draw your diagram here:

You could also try to find out:

- how many plants are actually used for food;
- why so few plants account for so much of our food;
- why so many plant species are endangered;
- how much of the earth's original rainforest has been cleared.

Parts of a Plant **Answers**

